

**Paper Machine  
Dryer Inspection  
Sample Report**



**Machine Number:** 2  
**Dryer Diameter:** 48"  
**Nat'l Board No:** 1234  
**Year Built:** 1975

**Manufacturer:** Beloit  
**Shell Length:** 312"  
**Max. Oper. Press:** 150 PSI  
**Max. Oper. Temp:** 350 °F

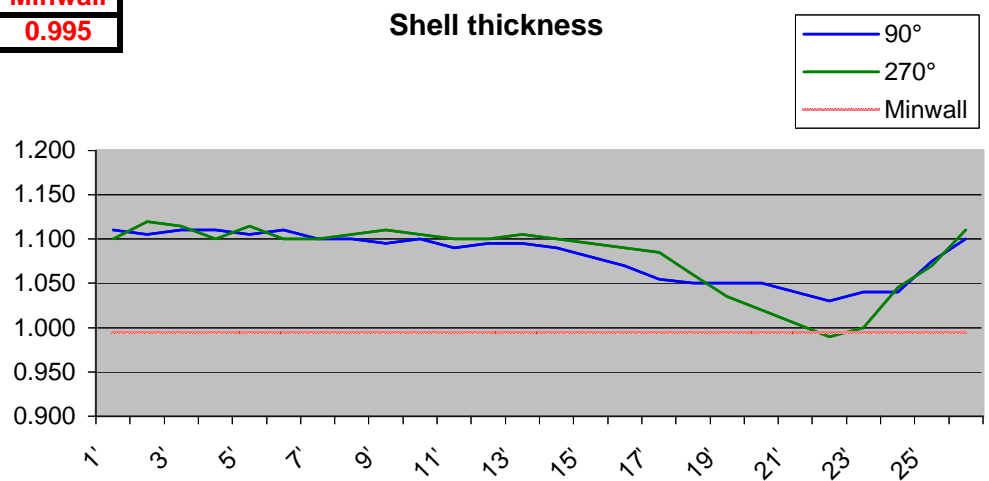
**Internal visual inspection:** Heads contain minor casting defects and pitting that does not appear to affect the integrity of this dryer.

**Magnetic particle head inspection:** No relative indications at time of inspection.

**Ultrasonic soundness bolt inspection:** Indication on tending-side bolt #23.

**Ultrasonic thickness inspection of shell:**

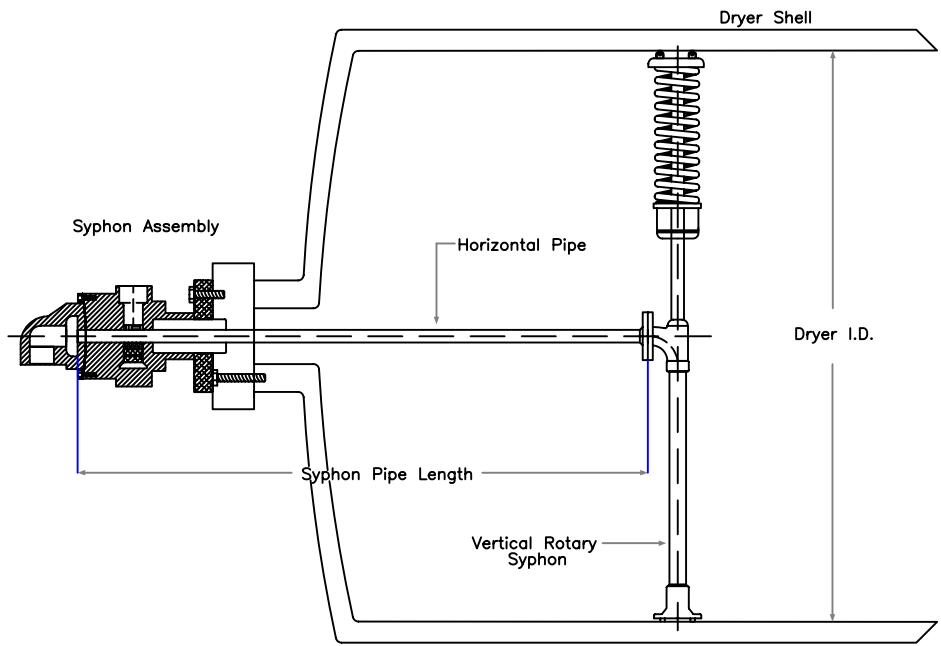
FT	90°	270°	Minwall
1'	1.110	1.100	0.995
2'	1.105	1.120	
3'	1.110	1.115	
4'	1.110	1.100	
5'	1.105	1.115	
6'	1.110	1.100	
7'	1.100	1.100	
8'	1.100	1.105	
9'	1.095	1.110	
10'	1.100	1.105	
11'	1.090	1.100	
12'	1.095	1.100	
13'	1.095	1.105	
14'	1.090	1.100	
15'	1.080	1.095	
16'	1.070	1.090	
17'	1.055	1.085	
18'	1.050	1.060	
19'	1.050	1.035	
20'	1.050	1.020	
21'	1.040	1.005	
22'	1.030	0.990	
23'	1.040	1.000	
24'	1.040	1.045	
25'	1.075	1.070	
26'	1.100	1.110	



**Notes:**  
 Units are displayed in inches.  
 Zero degree reference is centerline of manway.  
 Distances are in feet from tending side of dryer.

**Recommendations:**  
 Replace/re-rate dryer as necessary.  
 Replace tending side bolt #23

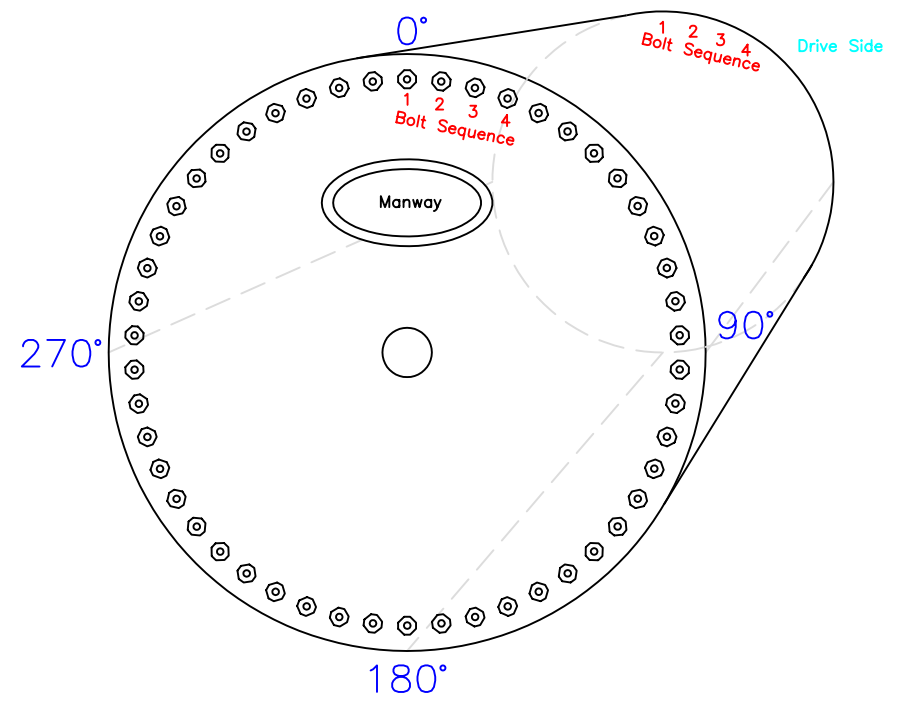
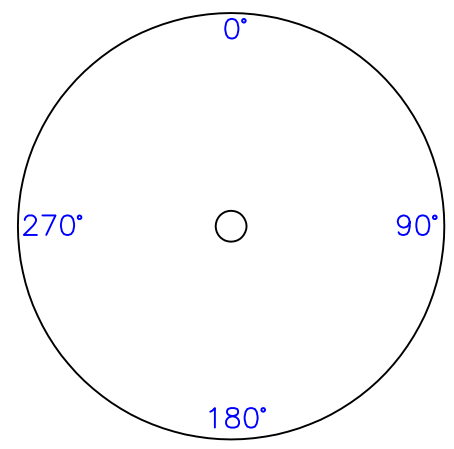
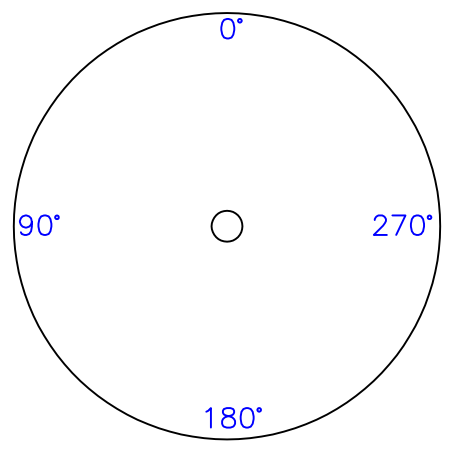




*Drive Side*

External View

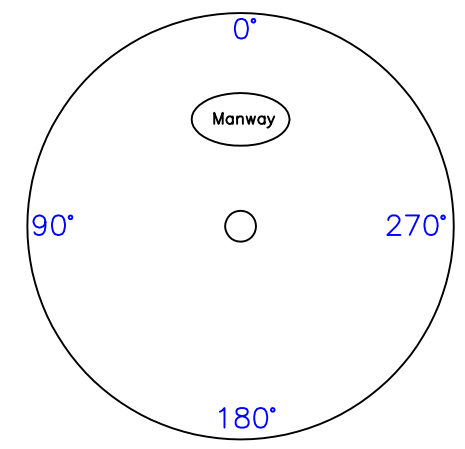
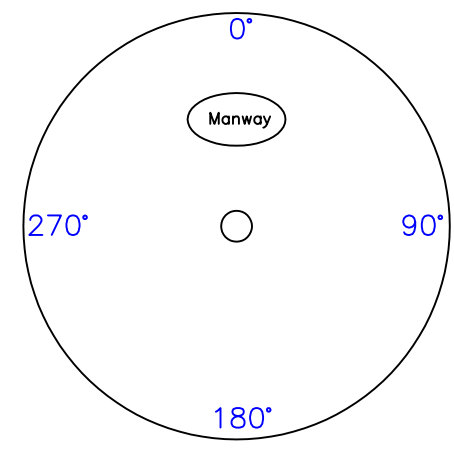
Internal View



*Tending Side*

External View

Internal View

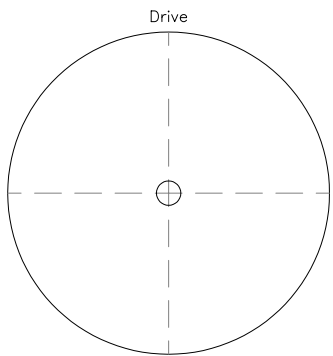




<b>CLIENT:</b>	<b>CONTACT:</b>
<b>PAPER MACHINE :</b>	<b>ICN:</b>
<b>INSPECTOR:</b>	
<b>DRYER NUMBER:</b>	<b>NAT'L BOARD NO:</b>
	<b>DATE OF INSPECTION:</b>

**RECORD OF INTERNAL DRYER INSPECTION**

Completed	Inspect per TAPPI Guidelines	
	Verification of vessel number on nameplate	Physically verify vessel number and national board number. Do not use entry documentation for verification.
	Problems with the siphon assembly	Siphon to shell gap:
	Grooves and/or pitting in shell	Deepest groove or pit:
	Erosion under the siphon shoe	Measurement:
	Loose condensate bars	
	Loose weights	
	Casting flaws such as shuts, porosity, inclusions, etc.	These are most likely to be in the head stiffeners or other angular parts of the heads.
	Cracks in the heads and at the shell's reversed flange areas	



Remarks

---

---

---

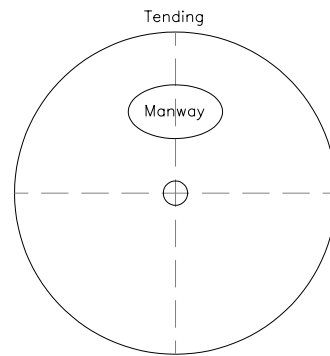
---

---

---

---

---



Reviewed by customer representative

Date